

Nyx 330 - post top

Design: Vilhelm Lauritzen Architects



NYX 330 is suitable for mounting on columns from 9-18 ft. The single luminaire can be used on any type of column with a top diameter of 2,4lbs. Adapter for 1,6 and 1,8lbs posts available. Nyx 330 is also available for mid-post mounting of more luminaires on a Ø2,4 cylinder.

Two or more luminaires can be mounted on each column. Luminaires two-by-two will be the solution for low columns - images can be found at www.focus-lighting.dk.

The Nyx 330 luminaire can be mounted on a double arm. The standard version is in hot-dipped galvanised steel and can be powder coated in the same colours as the luminaires.



NYX is a series of external luminaires for wall or column mounting. Nyx is the answer to today's demands for pleasant and well-defined light in urban areas.

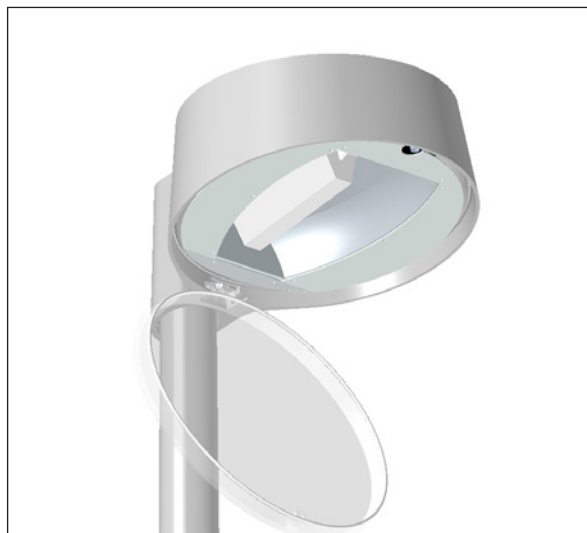
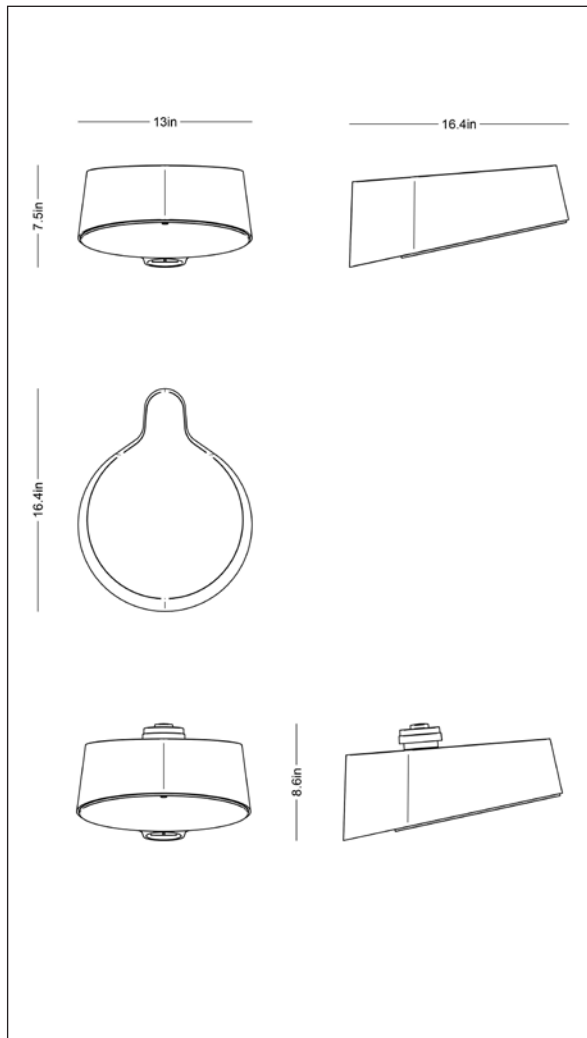
Nyx 330 is available for post-top and wall mounting. Like the rest of the Nyx series, it comes in black, corten brown, and two grey colours suitable for galvanised standard columns. Made of cast silicon with frosted polycarbonate shades, the luminaires are simple and safe and do not invite to vandalism.

The NYX luminaires are available with LED, and the shade edge being visible, it offers optical guidance.



Nyx 330 post top Comfort

Design: Vilhelm Lauritzen Architects



Luminaire specs:

Material:	Cast aluminium
Finish:	Raw anodized Graphite grey: YW355F Silver grey: Y2370I Black: Noir 900 Sablé, SN351F Corten brown: YX355F RAL by your choice
Shade:	UV-resistant polycarbonate, frosted
Mounting:	Post top/pipe: Ø2,4 in x H4 in
Connection:	In the post, 18 ft SJTW5xAWG18 (SJTW3xAWG18 for NEMA socket), is included
Classification:	cULus; Wet location; IP65; class I; IK10 (with NEMA socket IK09)
Corrosion class:	C4, C5 optional
Weight:	18 lbs
Wind sweeping area:	0,57 ft ²

LED specs:

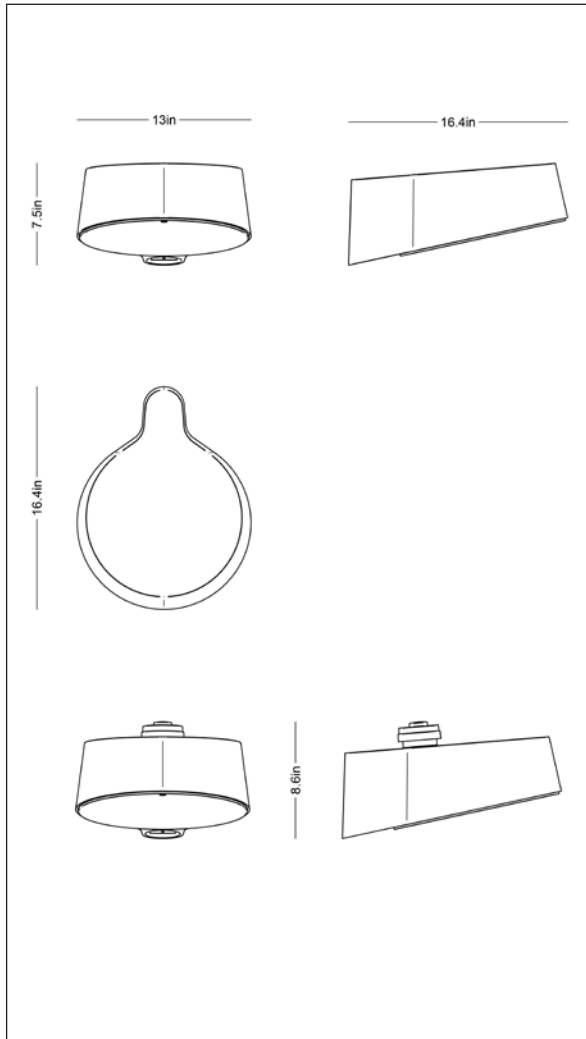
LED:	FF-DA with lenses
Operational life:	min 100,000 hours at ta max 77°F (25°C), L90B10
Color temperature:	2700, 3000, or 4000 K
Color rendering:	min 70, typically 75 CRI, 80 CRI optional OBS: longer lead times for CRI 80
Color accuracy:	5 Steps SDCM

Driver specs:

Driver:	Xitanium 55W 0.1-1.8A 0-10V
Inrush current:	@120V; max 23 A (10% after 166,5 µs) @277V; max 51,5 A (10% after 158 µs)
Nominal voltage, AC:	120-277 Vac
Op. input voltage, AC:	108-305 Vac
Nominal voltage, DC:	125-250 Vdc
Nom. frequency range:	50-60 Hz
Surge protection:	L/N-GND: 6 k; L-N: 6 kV
Operational life:	min 100,000 hours
Dimming/control:	0-10V
Other control options:	via NEMA socket

Nyx 330 post top T3

Design: Vilhelm Lauritzen Architects



Luminaire specs:

Material:	Cast aluminium
Finish:	Raw anodized Graphite grey: YW355F Silver grey: Y2370I Black: Noir 900 Sablé, SN351F Corten brown: YX355F RAL by your choice
Shade:	UV-resistant polycarbonate, frosted
Mounting:	Post top/pipe: Ø2,4 in x H4 in
Connection:	In the post, 18 ft SJTW5xAWG18 (SJTW3xAWG18 for NEMA socket), is included
Classification:	cULus; Wet location; IP65; class I; IK10 (with NEMA socket IK09)
Corrosion class:	C4, C5 optional
Weight:	18 lbs
Wind sweeping area:	0,57 ft ²

LED specs:

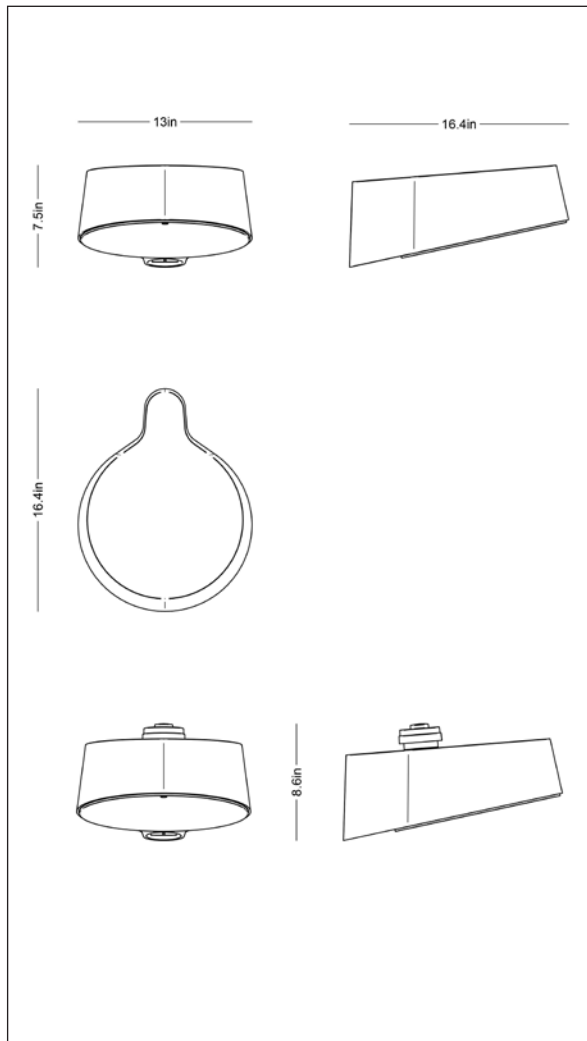
LED:	FF-DA with lenses
Operational life:	min 100,000 hours at ta max 77°F (25°C), L90B10
Colour temperature:	2700, 3000, or 4000 K
Color rendering:	min 70, typically 75 CRI, 80 CRI optional OBS: longer lead times for CRI 80
Color accuracy:	5 Steps SDCM

Driver specs:

Driver:	Xitanium 55W 0.1-1.8A 0-10V
Inrush current:	@120V; max 23 A (10% after 166,5 µs) @277V; max 51,5 A (10% after 158 µs)
Nominal voltage, AC:	120-277 Vac
Op. input voltage, AC:	108-305 Vac
Nominal voltage, DC:	125-250 Vdc
Nom. frequency range:	50-60 Hz
Surge protection:	L/N-GND: 6 k; L-N: 6 kV
Operational life:	min 100,000 hours
Dimming/control:	0-10V
Other control options:	via NEMA socket

Nyx 330 post top T2

Design: Vilhelm Lauritzen Architects



Luminaire specs:

Material:	Cast aluminium
Finish:	Raw anodized Graphite grey: YW355F Silver grey: Y2370I Black: Noir 900 Sablé, SN351F Corten brown: YX355F RAL by your choice
Shade:	UV-resistant polycarbonate, frosted
Mounting:	Post top/pipe: Ø2,4 in x H4 in
Connection:	In the post, 18 ft SJTW5xAWG18 (SJTW3xAWG18 for NEMA socket), is included
Classification:	cULus; Wet location; IP65; class I; IK10 (with NEMA socket IK09)
Corrosion class:	C4, C5 optional
Weight:	18 lbs
Wind sweeping area:	0,57 ft ²

LED specs:

LED:	FF-DA with lenses
Operational life:	min 100,000 hours at ta max 77°F (25°C), L90B10
Color temperature:	2700, 3000, or 4000 K
Color rendering:	min 70, typically 75 CRI, 80 CRI optional OBS: longer lead times for CRI 80
Color accuracy:	5 Steps SDCM

Driver specs:

Driver:	Xitanium 55W 0.1-1.8A 0-10V
Inrush current:	@120V; max 23 A (10% after 166,5 µs) @277V; max 51,5 A (10% after 158 µs)
Nominal voltage, AC:	120-277 Vac
Op. input voltage, AC:	108-305 Vac
Nominal voltage, DC:	125-250 Vdc
Nom. frequency range:	50-60 Hz
Surge protection:	L/N-GND: 6 k; L-N: 6 kV
Operational life:	min 100,000 hours
Dimming/control:	0-10V
Other control options:	via NEMA socket

Spec-sheet - Nyx 330 Post Top T2

Product Info

Item No	Wattage	Current	2700K	3000K	4000K	BUG	lm/W
US8041	23W	380 mA	1918 lm	2019 lm	2138 lm	B0 U2 G1	83-93
US8042	28W	510 mA	2498 lm	2630 lm	2786 lm	B1 U2 G1	89-100
US8043	35W	640 mA	3052 lm	3213 lm	3405 lm	B1 U2 G1	87-97
US8044	42W	770 mA	3584 lm	3774 lm	3999 lm	B1 U2 G2	85-95

Variant codes

Color	Corrosion Class	Color Temp/CRI	Supply Voltage	Controls	Mounting
01 raw anodized	C4 C4 Standard	827 2700K, 80 CRI	W 120-277 (60 Hz)	N Nema	M1 post top 2.4 inch
17 corten brown	C5 C5 Coastal	830 3000K, 80 CRI		V 0-10V	M3 mid-post 2.4 inch
4 graphite grey		840 4000K, 80 CRI			
66 black textured mat					
9 silver grey					
RAL other RAL colors					

Accessories

Item no	Option
06034	Lamella shade